

# Remote Monitoring Supplier Briefing Day

3<sup>rd</sup> July 2008

Ramada Hotel  
Belfast

# Format



- Presentations

Welcome and Introduction

Eddie Ritson

Our Vision

Eddie Ritson

Design and Implementation

Bridget Bergin

ICT Infrastructure

David Bryce

Procurement Approach

Nick Caine

- Questions and Answers

- 1:1 Sessions

# Remote Monitoring



## Our Vision

Eddie Ritson  
Programme Director

# Vision



- Improving quality of care and efficiency
- Bringing information to professionals
- Enable new ways to manage increasing burden of chronic disease
- Scale, end-to-end application

# Benefits

European Centre for



- Improving the quality of care and quality of life for patients
- Informing patient centred care management. Enabling a reduction in acute in inpatient admissions
- More and better targeted proactive support, enabling greater patient control
- Optimising use of staffing resources
- Improved quality of assurance through improvements in the flow of accurate and timely information

# Remote Monitoring



## Design and Implementation

Bridget Bergin  
Programme Director

# Objectives

European Centre for



- Good communication with all stakeholders
- Ownership across HPSS:
- Corporate Staff, Clinicians, Nurses, AHP, ICT
- Best design to meet future service needs

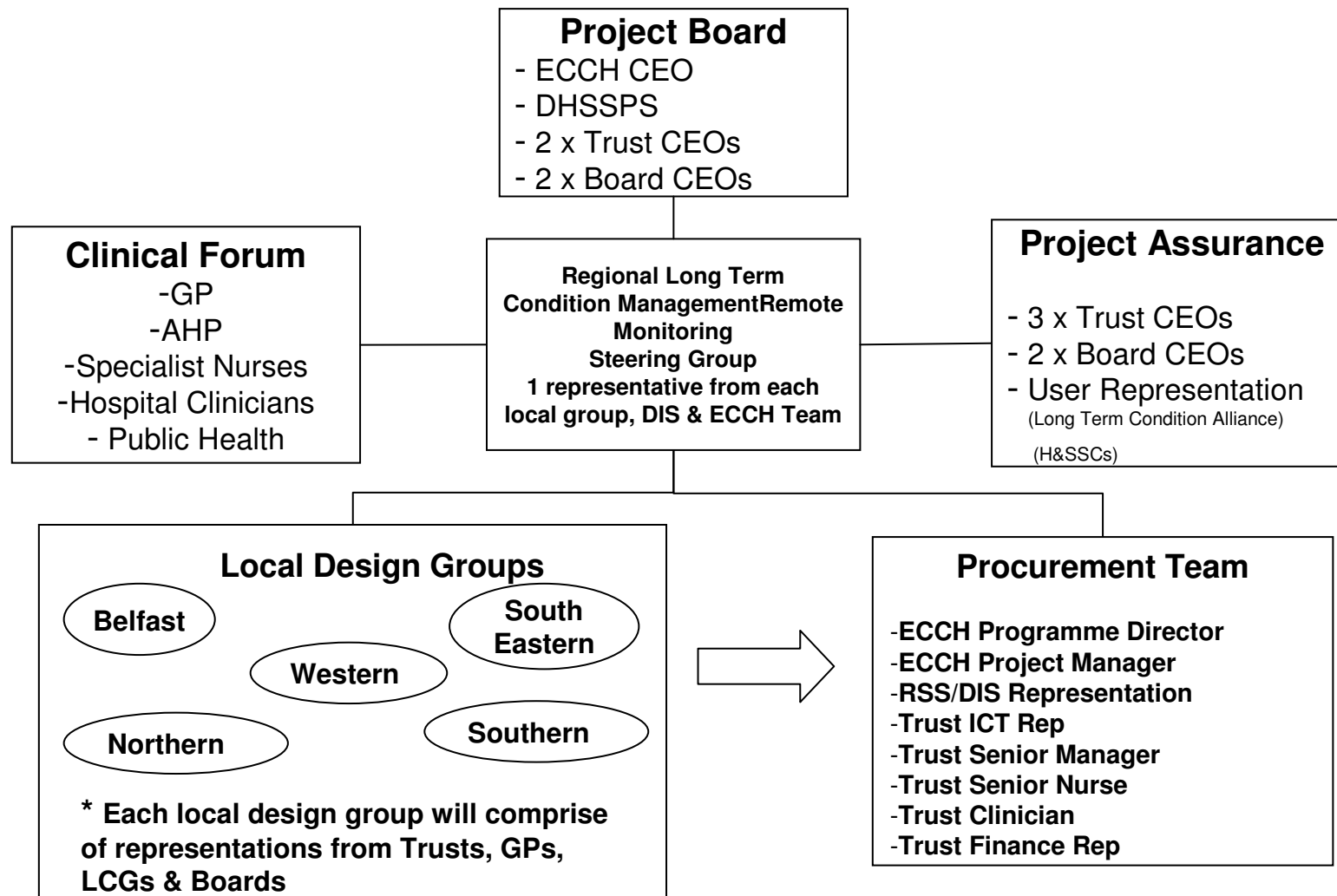
# HOW?

European Centre for



- Structured approach
- PRINCE2 methodology – Project Management
- Clinical Design elements
- Importance of ICT

# Project Management Structure



# Progress To-Date



- Project Board 2<sup>nd</sup> meeting 29/07/08
- Regional Steering Group – 2 meetings
- Local Design Groups – 3<sup>rd</sup> series
- Clinical Forum & Sub-groups
- Evaluation Advisory Group established
- Initial Engagement
  - HSC Councils
  - Long Term Condition Alliance

# Initial Design



## Elements:

- Patient Identification
  - moving to NI approach
- Central Triage
- Local Response
  - Pathways & Protocols
- Clinical design
- Evaluation

# Modelling

(operating at full capacity)



- Assumption: 1 cycle = 13 weeks
- Number of patients on...
  - 4 cycles = 10% to 30%
  - 2 cycles = 45% to 35%
  - 1 cycle = 45% to 35%
- Equates to 3,000 - 4,000 units in use at any one point in time and approximately 10,000 – 15,000 cycles per annum.

# Key Issues

European Centre for



- Patient centred
- Effective strategic & operational partnership
- Technical and service reliability
- Future proofing and flexibility
- Patient education