

Netwell Conference Ambient Assisted Living, Research Briefing Workshop

Investment and Procurement Perspective

Eddie Ritson

Programme Director – Strategy Development
European Centre for Connected Health



Department of
**Health, Social Services
and Public Safety**

www.dhsspsni.gov.uk

European Centre for



NI Health Economy Perspective

1. Issues we face
2. Using technology to help manage Long Term Conditions
3. Look to the future



Department of
**Health, Social Services
and Public Safety**

www.dhsspsni.gov.uk

European Centre for



What do People Want?

1. Improved quality of life, health, well-being & independence
2. To be supported & enabled to self-care & to be involved in decisions about them
3. To have some choice & control over their care & support
4. To have services which are integrated, flexible, proactive & responsive
5. To have services that are high quality, efficient & sustainable



Key Challenges Facing NI Health and Social Care System

- Increasing Demand (Demographics & Morbidity)
- Quality, Safety and Accessibility
- Improving Performance
- Involving People
- Resource Constraints



Department of
**Health, Social Services
and Public Safety**

www.dhsspsni.gov.uk

European Centre for



Why Focus on Long Term Conditions?

- 30% of population
- 60% of patients >65 years
- 52% of all GP appointments
- 65% of all OP appointments
- 72% of all inpatient appointments
- Twice as likely to have used Social Services in last 6 months
- Three times as likely to have used community nurses within last 6 months
- >70% of all current healthcare expenditure (& set to rise)



Department of
**Health, Social Services
and Public Safety**

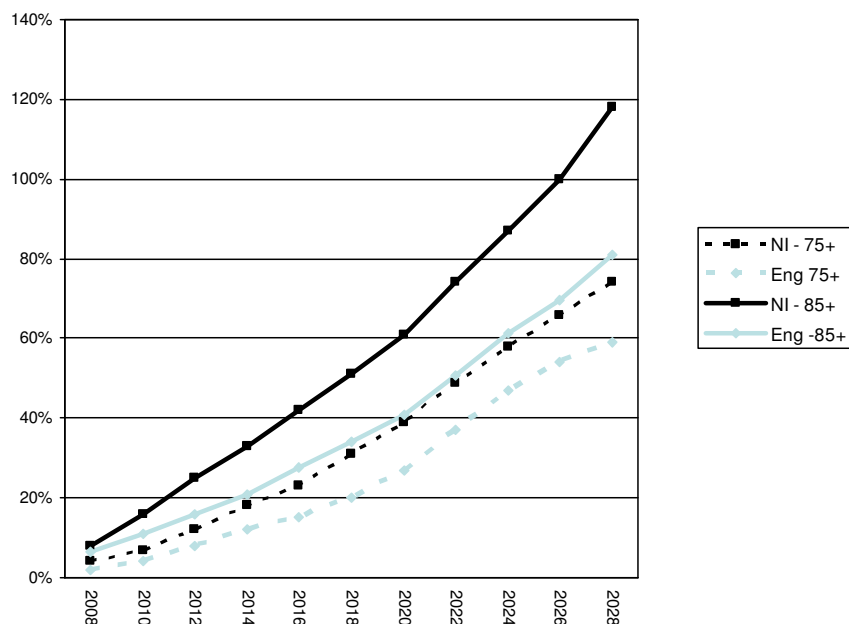
www.dhsspsni.gov.uk

European Centre for

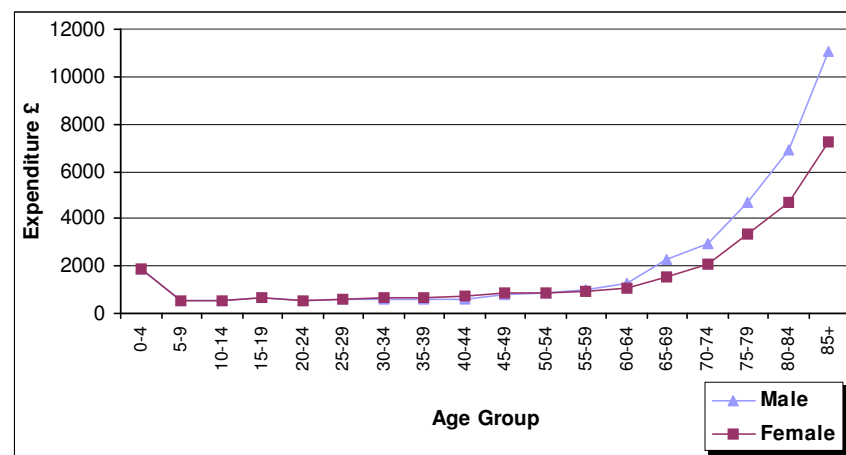


Why Focus on Long Term Conditions

Projected percentage increase in elderly population (relative to 2006)



Age/Gender Costs – All Services, 2003/04



ie. RESOURCE TIME BOMB



Department of
**Health, Social Services
and Public Safety**

www.dhsspsni.gov.uk



European Centre for

European Commission

“The way healthcare is presently delivered has to be deeply reformed. The situation is becoming unsustainable and will only worsen in the future as chronic diseases and demographic change place additional strains on healthcare systems around Europe.

A new healthcare delivery model based on preventative and person-centred health systems is needed. This new model can only be achieved through better use of ICT in combination with appropriate organisational change and skills.”



Department of
**Health, Social Services
and Public Safety**

www.dhsspsni.gov.uk

European Centre for



The Role of the European Centre for Connected Health

- To improve the quality and responsiveness of services by fast tracking new products and technological innovations in health and social care
- To promote the establishment of an ICT infrastructure fit for purpose for the 21st century
- Contribute to the advancement of the wider European e-Health agenda, and thereby
- Contribute to the establishment of NI as an outward focussed and competitive region in the global economy



Department of
**Health, Social Services
and Public Safety**

www.dhsspsni.gov.uk

European Centre for



NI Vision for Remote Telemonitoring Service

- Scale, end-to-end application
- Bringing information to professionals
- Enabling new ways to manage increasing burden of chronic disease
- Improving efficiency of care
- Improving quality of care



Department of
**Health, Social Services
and Public Safety**

www.dhsspsni.gov.uk

European Centre for



The Service We Wish to Procure

- The supply, delivery, installation, commissioning, maintenance, decommissioning and associated making good of equipment;
- The provision of support and other associated services such as training;
- The collection, processing, analysis, transmission and/or otherwise making available of relevant data (including the triggering of alerts to designate point of contact)
- The development and implementation of relevant system interfaces;
- The provision of a triage service to include technical triage and optionally 1st line clinical triage; and
- Also:
 - Support evaluation
 - Compliant with current and emerging standards for interoperability
 - Future proofed



Department of
**Health, Social Services
and Public Safety**

www.dhsspsni.gov.uk

European Centre for



Anticipated Benefits

- Improving quality of care & quality of life for patients
- Informing patient-centred case management. Enabling reductions in inpatient admissions
- More & better targeted proactive support, enabling greater patient control
- Optimising use of staffing resources
- Improved quality assurance through improving the flow of accurate & timely information



Department of
**Health, Social Services
and Public Safety**

www.dhsspsni.gov.uk

European Centre for



Case for Change

- Not about technology or economic gain, but about issues of clinical and user concern, such as:
 - Improving Health
 - Optimising independent living & support for carers
 - Early intervention & case management
 - Supporting professionals & multi-disciplinary networks
 - Streamlining the operational delivery of services
 - Reducing risk
- For health authorities and professionals, the economic benefits are secondary to the care benefits



Department of
**Health, Social Services
and Public Safety**

www.dhsspsni.gov.uk

European Centre for



The Future

- Immediate focus on Heart Failure, Diabetes, COPD
- Developing a Connected Health strategy to take this further
 - Stroke
 - Support of independent living
 - Early discharge
 - Supporting clinical networks
 - Mental health
 - Dementia
 - See www.eu-cch.org
- Electronic Care Record
- Links with academic and industry to promote innovation



Department of
**Health, Social Services
and Public Safety**

www.dhsspsni.gov.uk

European Centre for

