

# Telemonitoring Service and the HSC ICT Infrastructure

**David Bryce**

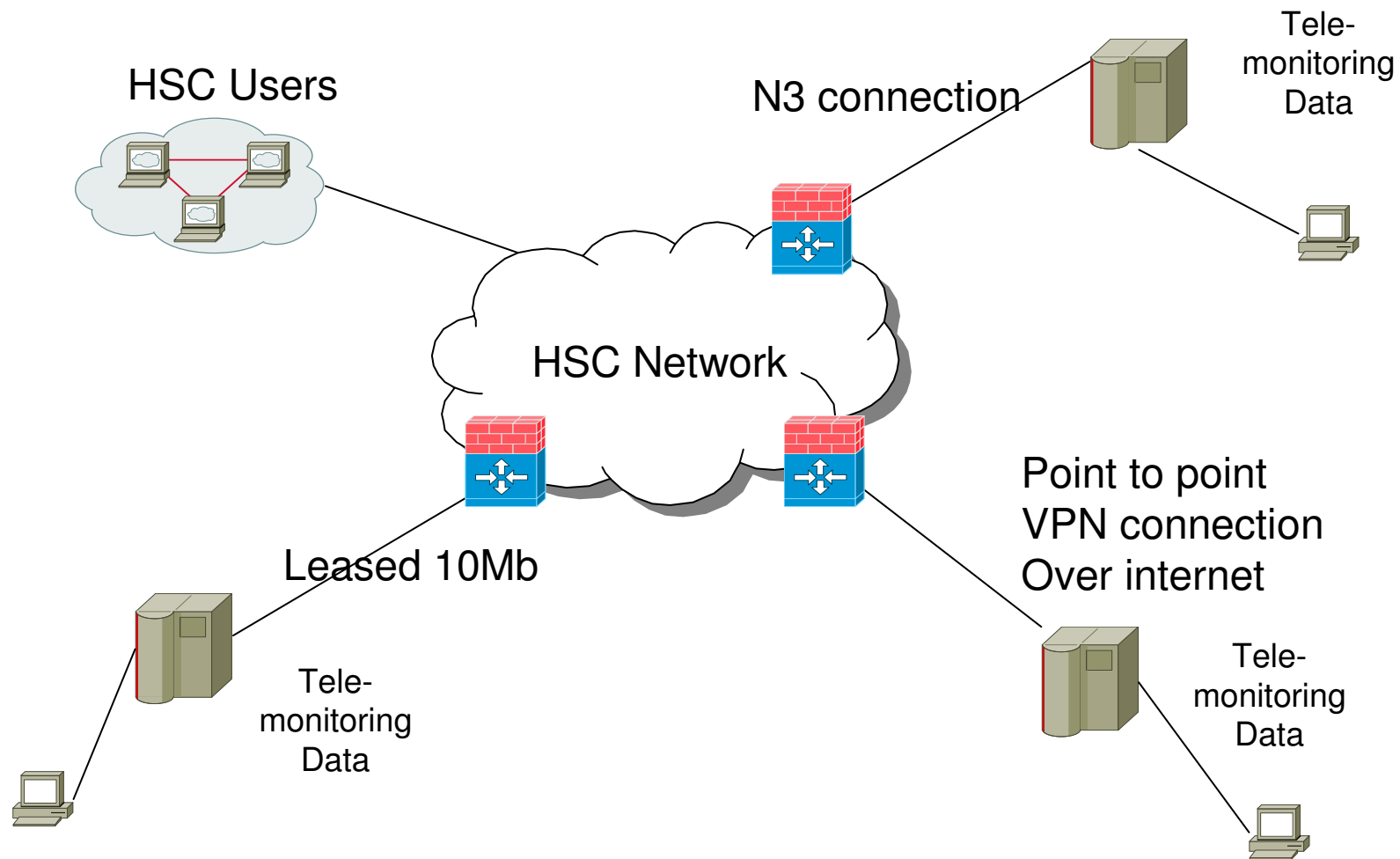
DHSSPS Directorate of Information Systems

# Tele monitoring ICT Issues

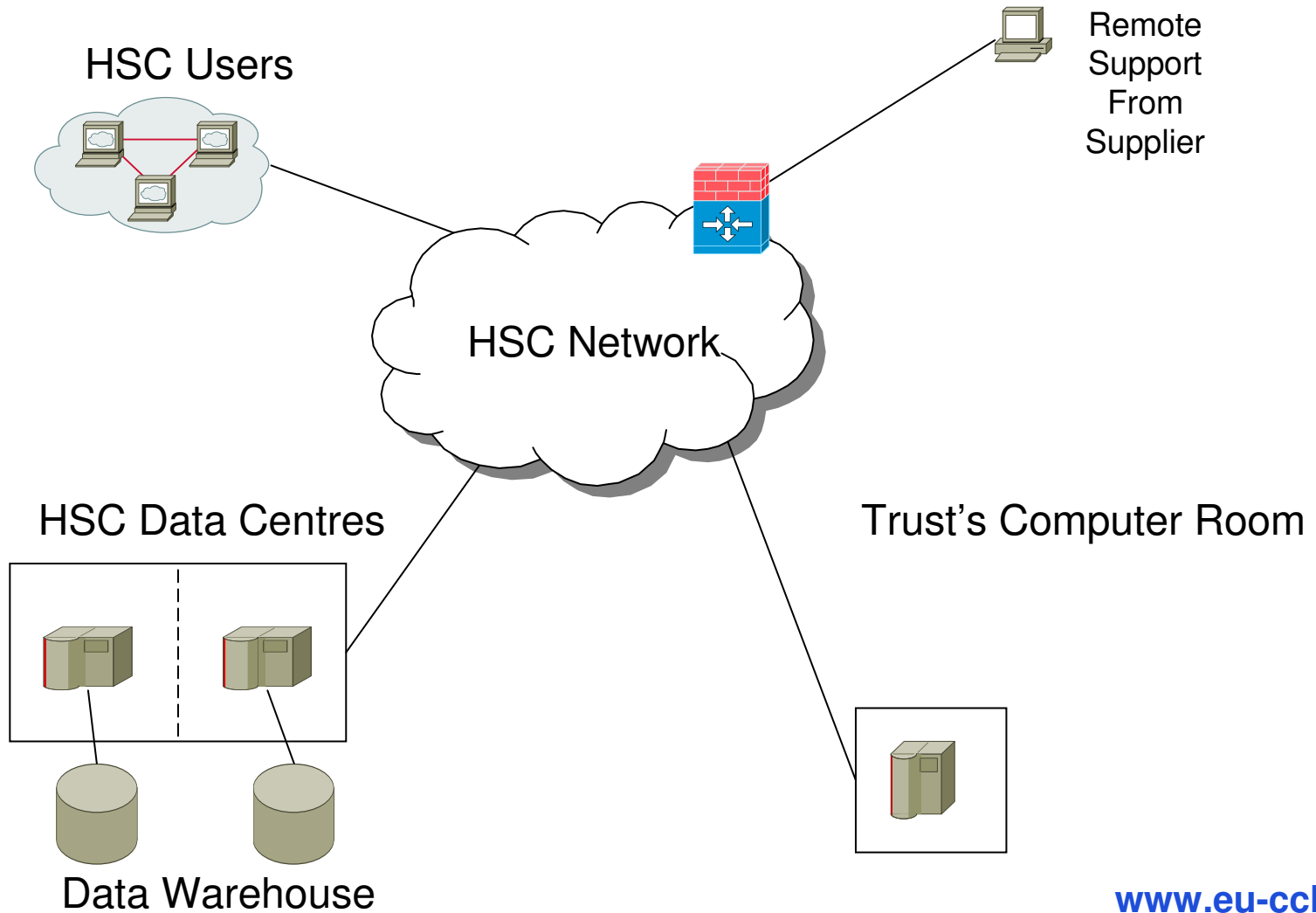


- **Location of Data**
  - Inside or Outside HSC Network
  - Triage Inside or Outside network
- **Security of HSC Patient Data**
  - Meeting HSC Security Policy
- **Network connectivity**
  - Use existing mechanisms
- **Authentication of HSC Users accessing Data**
- **Availability of Data to HSC Users**
- **Patient/Client identifiers**
- **Interoperability**

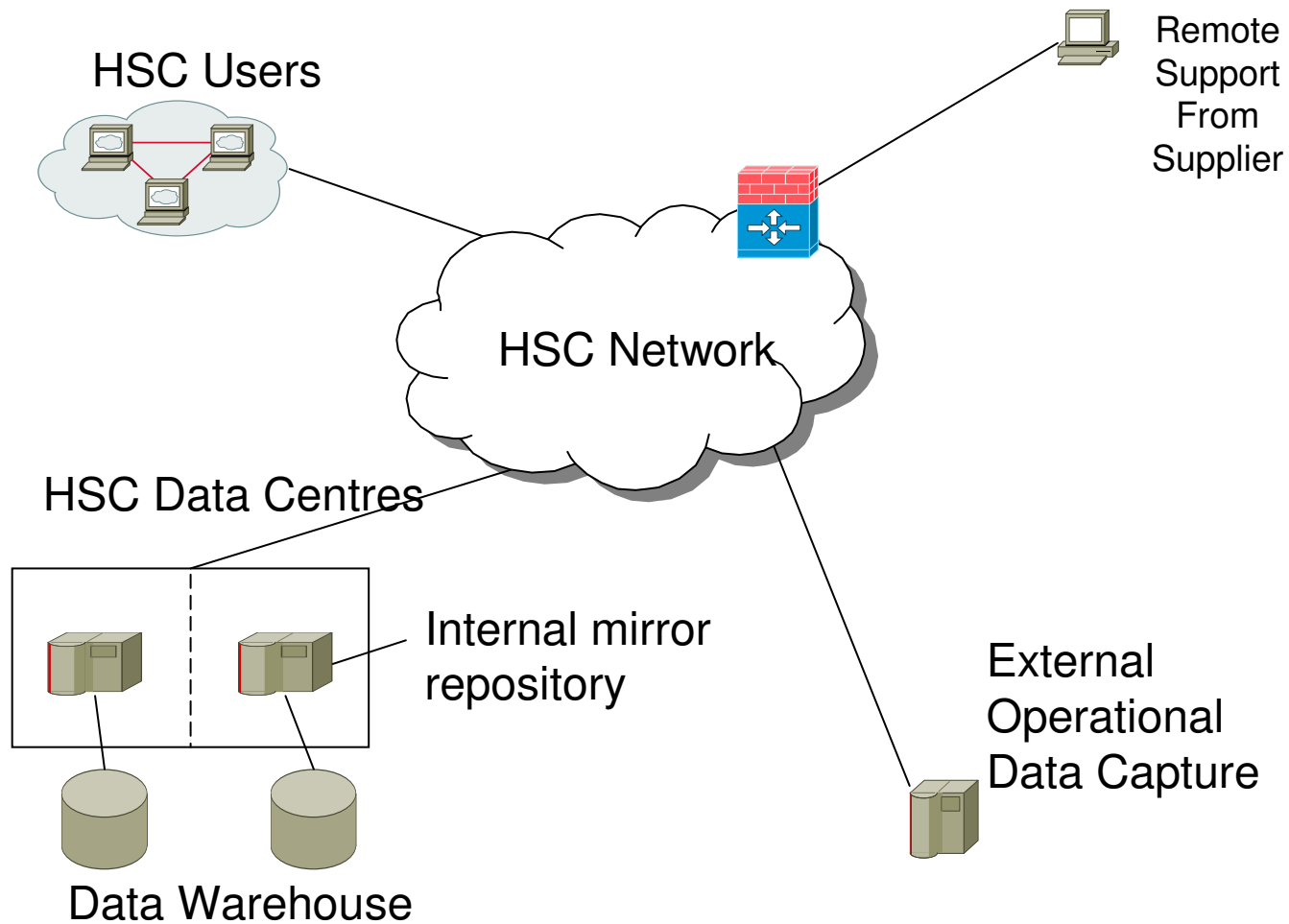
# Externally hosted Data and Network Options



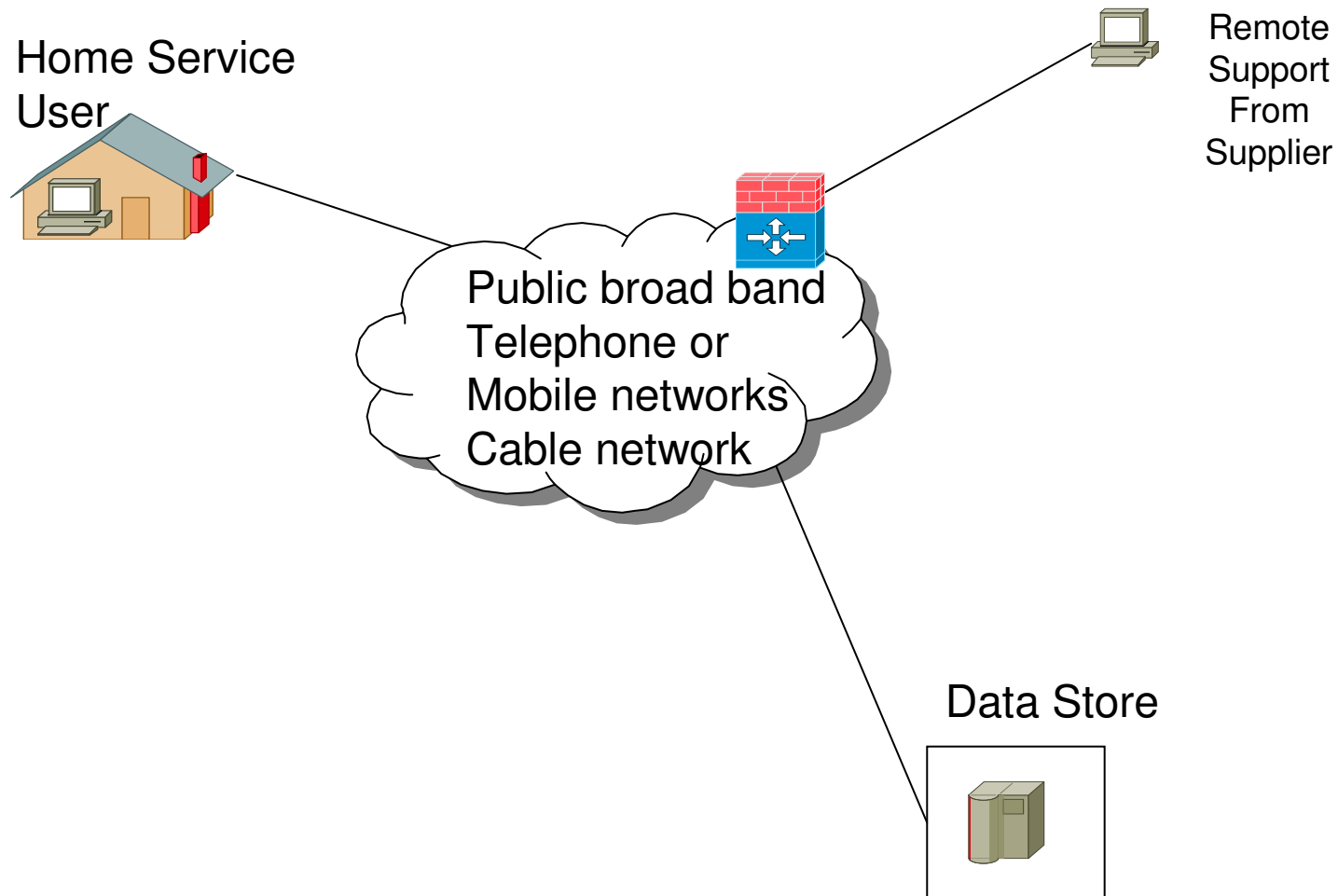
# Options for Internally Hosted Data



# Hybrid Internal /External Data



# Connection to Home Users



- **Authentication of HSC Users**
  - Individual accounts conforming to HSC Security policy
  - Which users? – access to GPs, A&E etc
  - LDAP directory 35,000 (includes Soscare users)
- **What is required availability?**
  - Monitoring 9-5, 7 days a week
  - Issues around making data available 24\*7
  - Impacts on design of service and required resilience

- Patient Identifiers
  - **Health and Care Number**
    - Unique for all NI Population
    - Used by Primary and Secondary Care, Community Social Services
    - Generic Web Service Interface for lookup
    - Compatible with NHS number
  - **Other numbers**
    - Hospital Casenotes
    - Soscare Numbers

# Other Issues



- Interoperability
  - Ability to support different devices
  - Different manufacturers devices
  - Loading into Data Warehouse
  - Feeder into future Electronic Health Record